

YAMAMOTO TUBE

A Revolutionizing Fuel Enhancer with Eco-Friendly



**100% natural Palm
Oil-Based Product**



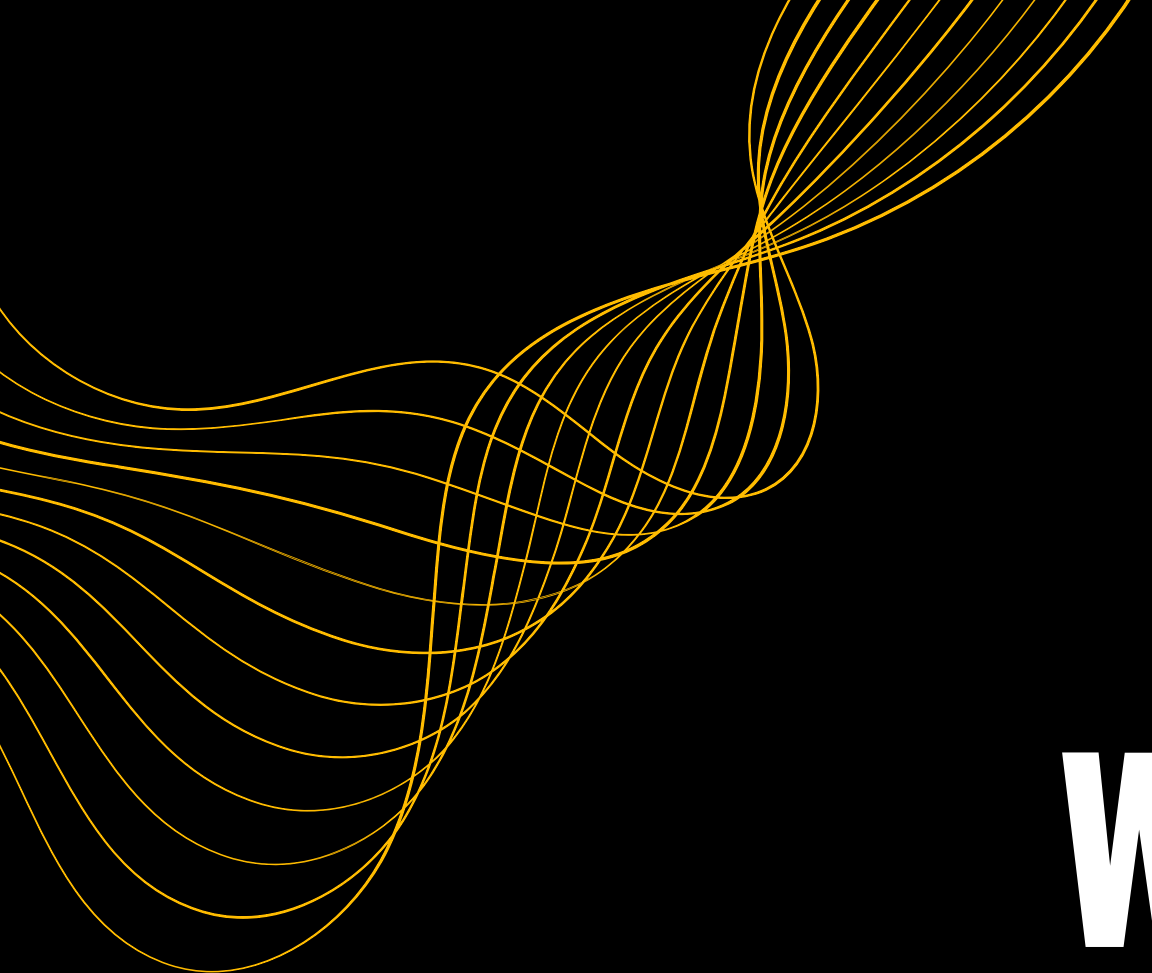
YAMAMOTOTUBE SV-1

I am excited to present to you an extraordinary investment opportunity that has the potential to not only drive impressive financial returns but also make a profound impact on our environment. This innovation represents a green initiative that is perfectly aligned with global efforts to reduce carbon footprint and create a sustainable future.

Regional Director

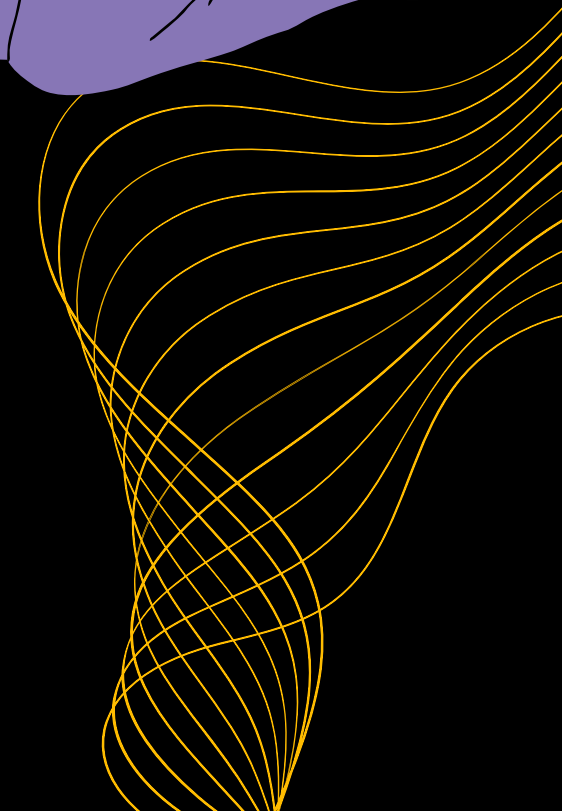
YAMAMOTOTUBE, I am proud to introduce our ground breaking product, the YAMAMOTOTUBE SV-1, made from 100% natural Palm Oil.





PROBLEM WORSENING OF CLIMATE CHANGE

Our world is facing a critical environmental climate change, driven by excessive carbon emissions. Cars and vans accounted for 48% of global transport carbon dioxide CO₂ emissions in 2022 (statistic based on International Energy Agency – IEA)



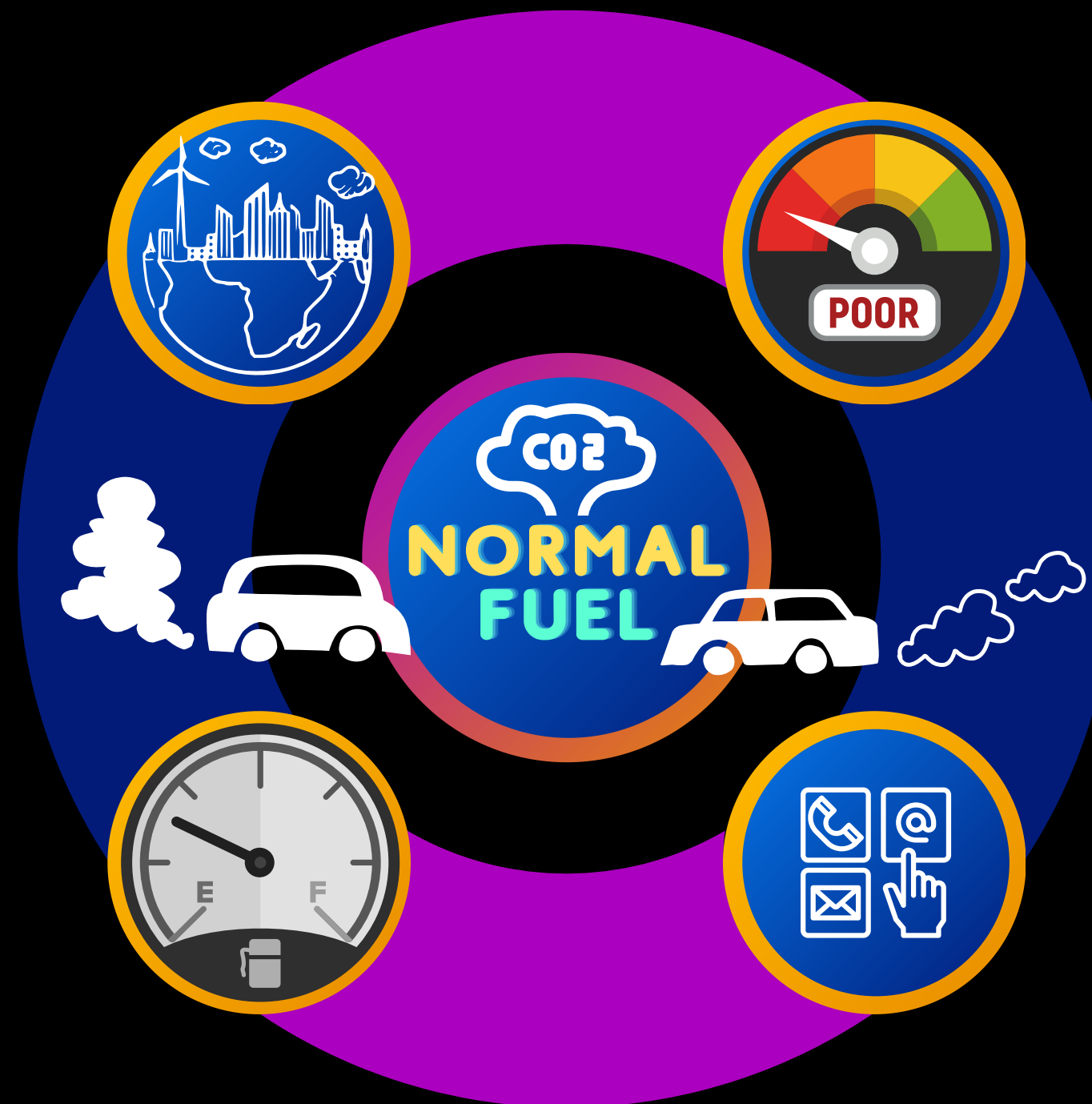
How normal fuel can negatively affect us?

Environmental Pollution

The combustion of normal fuel can release harmful emissions into the environment including carbon dioxide (CO₂), nitrogen oxides (NO_x) and sulfur dioxide (SO₂). These pollutants contribute to air pollution and have detrimental effects on the environment including global warming, smog formation and adverse health effects for humans.

Increased Fuel Consumption

Normal fuel often contains additives and compounds that do not burn efficiently. This can result in incomplete combustion, meaning not all the fuel is converted into energy and some of it is wasted. Incomplete combustion leads to increased fuel consumption because your vehicle has to burn more fuel to produce the desired power output. This not only leads to higher fuel costs but also contributes to increased carbon emissions.



Poor Vehicle Performance

One significant factor is the presence of impurities and contaminants in fuel. These can clog fuel injectors, filters and other critical engine components, leading to inefficient combustion. This results in reduced power, slower acceleration and overall poor vehicle performance.

Increased Risk of Vehicle Breakdown

When impurities and contaminants in the fuel accumulate in the engine, they can lead to carbon deposits and the formation of harmful substances like carbon monoxide. These deposits can damage vital engine components, such as spark plugs, cylinders and exhaust systems. Over time, this can lead to engine misfires, reduced efficiency and ultimately, vehicle breakdowns.



YAMAMOTOTUBE SV-1 ECO-GREEN FUEL ENHANCER

YAMAMOTOTUBE SV-1, is a pioneering solution to address these problems by providing a cleaner and more efficient fuel source.

YAMAMOTO TUBE

Introduction

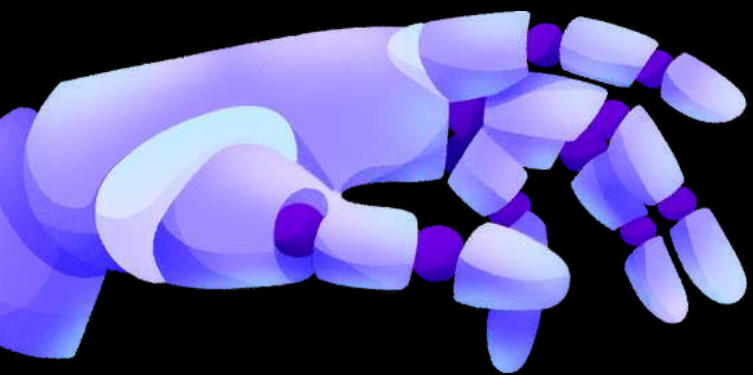
In the year 2000, Mr Yamamoto Yusuke, after extensive research and innovation, introduced a groundbreaking product known as “YAMAMOTO”. This revolutionary product specifically designed to significantly reduce the release of carbon dioxide (CO₂) into the atmosphere, stemming from transportation activities.

YAMAMOTO distinguishes itself by being crafted exclusively from 100% natural Palm Oil. It stands as a paragon of eco-friendliness and poses no harm to both the human body and the environment. Over the years, his relentless pursuit of excellence has led to a monumental development.

YAMAMOTO Overview

In 2010, Mr. Yamamoto Yusuke fused YAMAMOTO with the cutting-edge technology of Artificial Intelligence (A.I.), ushering in a revolutionary product that can be seamlessly integrated into a wide array of transportation modes, encompassing motorbikes, cars, buses, trucks, vessels, and generators. This transformative evolution underscores our commitment to offering sustainable solutions for a greener, more eco-conscious world.

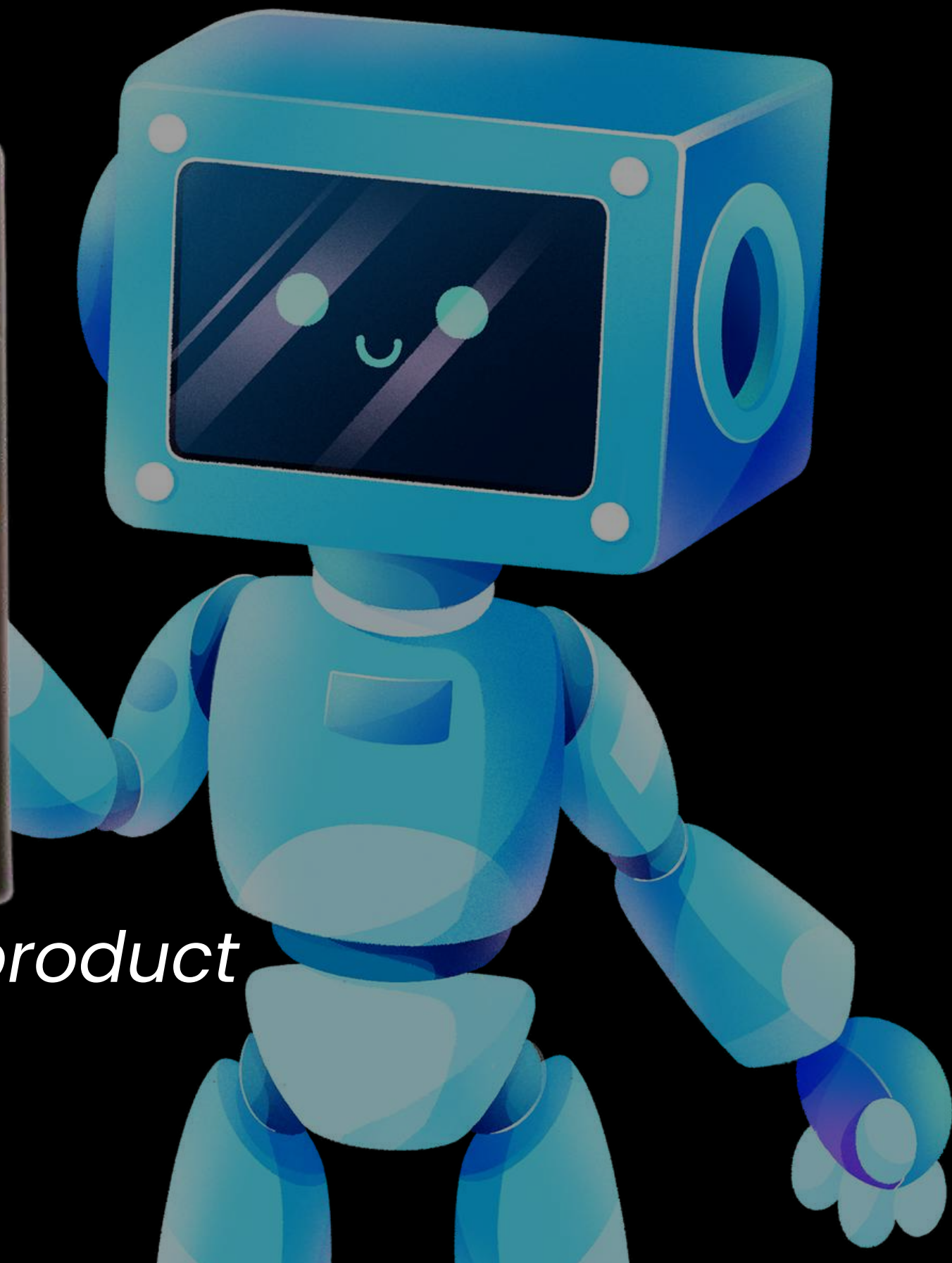
Artificial Intelligence



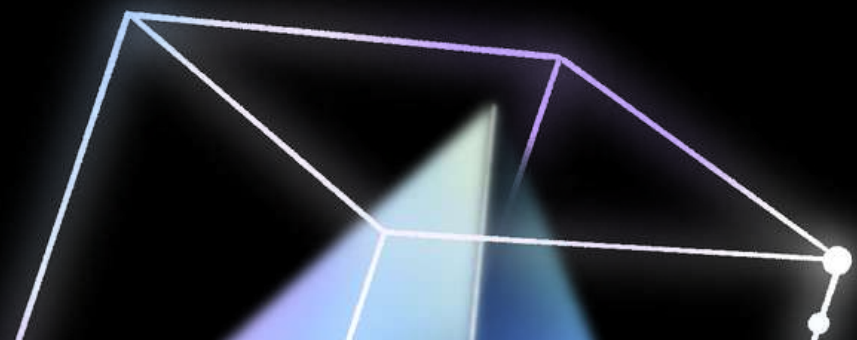
ヤマモト

A.I TECHNOLOGY
ARTIFICIAL INTELLIGENCE

YAMAMOTOTUBE SV-1



revolutionary product



Here's why YAMAMOTOTUBE SV-1 is a game-changer



YAMAMOTO SV-1 can reduce impurities, improve combustion efficiency and help lower emissions. With YAMAMOTO SV-1, you can expect better vehicle performance, reduced fuel consumption, lower maintenance costs and a positive impact on the environment.

Eco-Friendly

100% natural Palm oil is a bio-based fuel source, offering a much cleaner and greener alternative to traditional fossil fuels. SV-1 can drastically reduce greenhouse gas emissions and dependence on nonrenewable resources



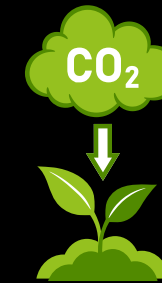
Economic Benefits

YAMAMOTO SV-1 is not just environmentally responsible but financially promising. The growing demand for ecogreen products opens up significant market opportunities. We are open to secure key partnerships and contracts, sharing and promoting a strong market interest in our product.



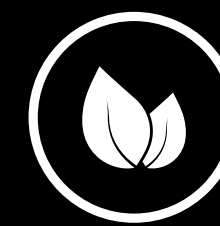
Carbon Footprint Reduction

By enhancing the combustion efficiency of fuels, YAMAMOTO SV-1 leads to a significant reduction in carbon emission. This not only aligns with global climate goals but also offers an opportunity for governments and corporations to meet their sustainability targets effectively.



Green Initiatives

YAMAMOTO SV-1 is a testament to our dedication to green initiatives. We actively promote sustainable Palm Oil cultivation practices, ensuring that the Palm oil used in our product is harvested responsibly without causing deforestation or harm to endangered species. Our supply chain is ethically sourced and transparent, making it a truly green product.



Benefits of using YAMAMOTOTUBE SV-1

YAMAMOTOTUBE SV-1 utilizes advanced AI technology to transform the molecules of petrol or diesel, making them finer and smaller without changing the content of the fuel. This process enhances combustion efficiency, allowing up to 95% of the fuel to burn, compared to standard combustion. As a result, the engine gains more power, runs more smoothly and consumes less petrol or diesel. Additionally, YAMAMOTOTUBE SV-1 further reduces white smoke emissions, which often result from incomplete combustion.



1 Reduced Carbon Emissions

Independent testing at the Singapore Vehicle Inspection Centre has shown up to 70% reduction in carbon emissions after using YAMAMOTOTUBE SV-1.

2 Improved Engine Performance

By enhancing fuel combustion, YAMAMOTO SV-1 significantly increases your vehicle's performance. This leads to a more powerful engine, run smoothly and a quieter engine sound.

3 Fuel Savings

Your RPM decreases, thus burning lesser fuel. You can save up to 40% on fuel costs, depending on your driving habits. You can pump 92 octane petrol and enjoy the superior power and smoothness of 98 octane petrol.

4 Lower Maintenance Costs

By reducing carbon buildup and engine stress, maintenance costs are reduced. Example; motorbikes usually need servicing every 2-3 months. With YAMAMOTO SV-1, we can extend the period up to 5-6 months for each maintenance. You can pump 92 octane petrol and enjoy the superior power and smoothness of 98 octane petrol.

5 Extended Engine Life

YAMAMOTO SV-1 contributes to prolonging the life of your engine. With a finest fuel enhancer, just like a new blood in our body. Our car will function much longer.

Certification and Compliance

Rest assured that YAMAMOTO SV-1 is fully certified and complies with relevant regulations and standards. It went through stringent test and is certified by ILAC-MRA (International Laboratory Accreditation Cooperation - Mutual Recognition Arrangement).

